



Grandstream Networks, Inc.

Watch the Video Streaming of Grandstream IP Cameras GXV36xx and Video Encoders GXV350x with Logiware go1984 Ver. 3.8.1.9



Introduction:

Grandstream IP cameras and Video Encoders have the advantage of being compatible with major monitoring systems that are found in the market, which is considered an important requirement in an enterprise environment. Grandstream IP cameras are not only compatible with the aforementioned systems, but goes beyond that to be compatible with simple desktop applications that you, the individual user, want to use to monitor your office, to keep an eye on your children at home, to know if there is someone in your backyard garden and much more.

This document is a tutorial illustrating the use of a camera monitoring software among others working with the Grandstream GXV36xx IP cameras and GXV350xVideo Encoder products. The software that is covered in this document is Logiware go1984 version 3.8.1.9.

Requirements:

To follow along with this tutorial, please have these requirements ready:

- A computer running Windows 7/Vista/2008/XP/2003 (32/64bits) connected to LAN or WAN environment.
- A Grandstream IP camera or Video Encoder with the latest firmware, connected to a LAN or WAN environment.
- The Logiware go1984 software installed .it can be downloaded from <http://www.go1984.com/>

Configuration on the Grandstream IP Cameras and Video Encoders:

The following settings need to be set up on your Grandstream IP Camera or Video Encoder :

1. Login to the Administration Interface using your login and password.
2. Click on “configuration”
3. Under Basic Settings, Click on Video & Audio
4. Under Video Streaming section, Click on Primary Stream Settings (see Fig. 1)
5. Set the Preferred Video Codec to MJPEG
6. Choose the Resolution*, the Bit Rate*, the Maximum Frame Rate* according to adjust the quality of the streaming.

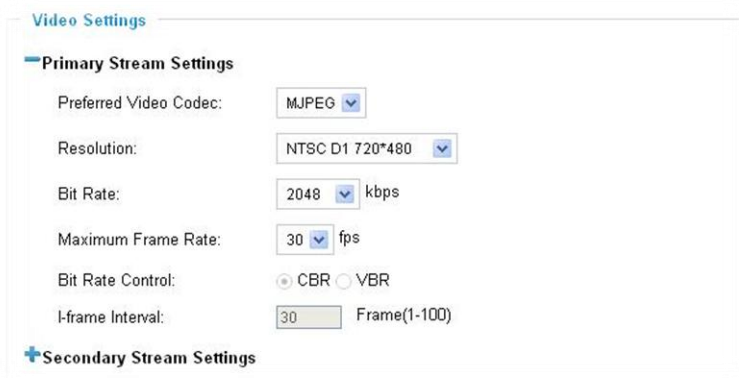


Fig.1: Primary Stream Settings

** changing this setting will have an impact on the quality of the streaming as well as on the traffic on your network*

Configuration on go1984:

To configure the go1984 to get the streaming from the Grandstream IP Camera or Video Encoder please follow the steps below:

1. Launch the go1984 application
2. Depending on your access rights (please refer to go1984 user manual), you can add an IP camera or Video Encoder. To add an IP camera or a Video Encoder, there are 2 ways:
 - a. Click On the “Add Camera” pull down menu (see Fig. 2):
 - i. Select Grandstream
 - ii. Select your Grandstream IP camera or Video Encoder. The Add Camera dialog box will pop up.

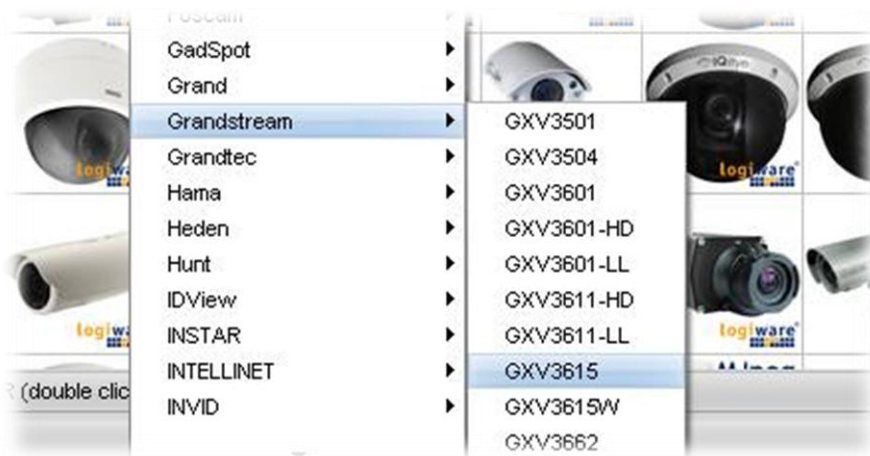


Fig.2: Adding the Grandstream IP Camera or Video Encoder using the pull down menu

- b. By using the search feature (see Fig. 3):
 - i. Type in “Grandstream” in the search textbox. A list of Grandstream devices will be displayed.
 - ii. Click on the picture of the Grandstream IP camera or Video Encoder that you have. The Add Camera dialog box will pop up.



Fig.3: Adding the Grandstream IP Camera or Video Encoder using go1984 search filter

3. When the Add Camera dialog box is displayed, you can do the following:

- a. In the properties section (see Fig. 4), enter the name of the camera (this can be any name you want to identify the camera with).
- b. Enter the IP address of the IP Camera or Video Encoder
- c. Enter the port number of your selected device (By default it's 80)
- d. Enter the Username and Password of the selected device.

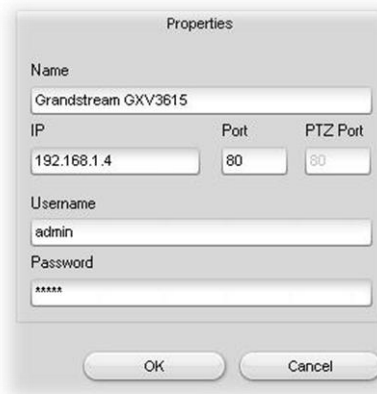


Fig.4: Properties section in Add Camera Dialog Box

4. Grandstream IP camera or Video Encoder video streaming will be displayed on go1984 under the image tab (see Fig. 5)



Fig.5: Video Streaming of a Grandstream IP Camera or a Video Encoder

NOTE: The Video Encoder GXV3504 can connect 4 Analog Cameras. The Go1984 will choose by default the first channel. So if you would like to choose one of the other channels then you need add the video encoder first then access to its video properties and change the Channel value to:

- "1": Second analog port
- "2": Third analog port
- "3": Fourth analog port

References:

For more information about the Grandstream IP Cameras and other products capabilities, please visit <http://www.grandstream.com> or contact us at support@grandstream.com

For more information about Logiware go1984 software please refer to <http://www.go1984.com> .